



QUICK SELECTION / Selezione veloce

input speed (n_1) = 1400 min⁻¹

| Output Speed n_2 [min ⁻¹] | Ratio i | Motor power P_{1M} [kW] | Output torque M_{2M} [Nm] | Service factor f.s. | Nominal power P_{1R} [kW] | Nominal torque M_{2R} [Nm] | Available B5 motor flanges | | | | | Available B14 motor flanges | | | | Output Shaft | Ratios code | |
|---|--------------|---------------------------------|-----------------------------------|------------------------|-----------------------------------|------------------------------------|----------------------------|----|----|------------|-----|-----------------------------|----|------------|-----|------------------|-------------|----|
| | | | | | | | -C | -D | -E | -F | -G | -R | -T | -U | -V | | | |
| | | | | | | | 71 | 80 | 90 | 100 112 | 132 | 80 | 90 | 100 112 | 132 | | | |
| 176 | 7.94 | 7.5 | 369 | 1.0 | 7.5 | 380 | B | | | | | | | | | | 302418 | 01 |
| 153 | 9.13 | 7.5 | 425 | 0.9 | 6.7 | 390 | B | | | | | | | | | | 302416 | 02 |
| 131 | 10.66 | 5.5 | 366 | 1.1 | 6.0 | 410 | B | | | | | | | | | | 302414 | 03 |
| 94 | 14.97 | 5.5 | 514 | 1.1 | 6.0 | 580 | B | | | | | | | | | | 202418 | 04 |
| 81 | 17.21 | 5.5 | 591 | 1.0 | 5.4 | 600 | B | | | | | | | | | | 202416 | 05 |
| 69 | 20.24 | 5.5 | 695 | 1.0 | 5.2 | 675 | B | | | | | | | | | | 162418 | 06 |
| 60 | 23.27 | 4 | 585 | 1.2 | 4.5 | 675 | B | | | | | | | | | | 162416 | 07 |
| 53 | 26.31 | 4 | 661 | 1.0 | 4.0 | 675 | B | | | | | | | | | | 132418 | 08 |
| 46.3 | 30.25 | 4 | 760 | 0.9 | 3.5 | 675 | B | | | | | | | | | | 132416 | 09 |
| 39.6 | 35.32 | 3 | 668 | 1.0 | 3.0 | 675 | B | | | | | | | | | | 132414 | 10 |
| 37.8 | 37.03 | 3 | 701 | 1.0 | 2.8 | 675 | B | | | | | | | | | | 112416 | 11 |
| 32.4 | 43.23 | 2.2 | 602 | 1.1 | 2.4 | 675 | B | | | | | | | | | | 112414 | 12 |
| 30.1 | 46.58 | 2.2 | 649 | 1.0 | 2.3 | 675 | B | | | | | | | | | | 82418 | 13 |
| 26.1 | 53.55 | 2.2 | 746 | 0.9 | 2.0 | 675 | B | | | | | | | | | | 82416 | 14 |
| 22.4 | 62.52 | 1.5 | 600 | 1.1 | 1.7 | 675 | B | | | | | | | | | | 82414 | 15 |
| 19.0 | 73.75 | 1.1 | 517 | 1.1 | 1.2 | 580 | B | | | | | | | | | | 62416 | 16 |
| 16.3 | 86.09 | 1.1 | 604 | 1.1 | 1.2 | 675 | B | | | | | | | | | | 62414 | 17 |

The dynamic efficiency is **0.94** for all ratios

Motor Flanges Available
Flange Motore Disponibili

B) Supplied with Reduction Bushing
Fornito con Bussola di Riduzione

B) Available on Request without reduction bushing
Disponibile a Richiesta senza Bussola di Riduzione

C) Motor Flange Holes Position
Posizione Fori Flangia Motore

EN Unit **X73C** is supplied with synthetic oil for lifetime lubrication, no maintenance is necessary. See table 1 for lubrication and recommended quantity. In table 2 please see possible radial loads and axial loads on the gearbox.

I Il riduttore **X73C** viene fornito completo di olio sintetico per la lubrificazione permanente e non necessita di alcuna manutenzione. Vedi tab.1 per oli e quantità consigliati. In tab.2 sono presenti i carichi radiali e assiali applicabili al riduttore.

D Das Getriebe **X73C** ist mit synthetischem Öl gefüllt und ist lebensdauergeschmiert. In Tabelle 1 ist die Schmiermenge und das empfohlene Schmiermittel angegeben. In Tabelle 2 sind die zulässigen Radial - und Axialbelastungen des Getriebes aufgeführt.

F Le réducteur **X73C** est fourni complet avec de l'huile synthétique pour la lubrification permanente et ne nécessite aucun entretien. Voir tableau 1 concernant les huiles et les quantités conseillées. Les charges radiales et axiales applicables au réducteur sont précisées dans le tableau 2.

E El reductor tamaño **X73C** se suministra, lubricado de por vida con aceite sintético y no requieren mantenimiento alguna. Ver tabla 1, para cantidades y aceites recomendados. En la tabla 2, se encuentran las cargas radiales y axiales admitidas por el reductor.

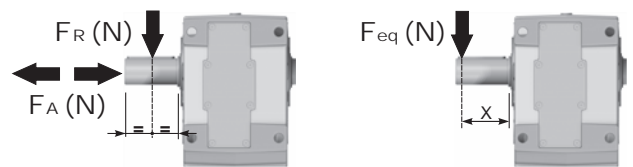
| Standard supplied | For these mounting position specify in the order or add oil Per queste posizioni specificare in fase d'ordine o aggiungere olio | | | | | |
|-----------------------|--|---------|---------|--------------------|---------|-----|
| | | | | | | |
| B3 | B6 | B7 | B8 | V5 | V6 | V8 |
| 2.45 LT | 2.55 LT | 1.80 LT | 1.95 LT | 4.05 LT | 2.55 LT | Ask |
| SHELL Omala S4 WE 320 | | | | ENI Telium VSF 320 | | |

For all details on lubrication and plugs check our website **tab. 1**
Per maggiori dettagli su lubrificazione e tappi olio vedi il nostro sito web

RADIAL AND AXIAL LOADS

Output shaft
Albero di uscita

$$F_{eq} = F_R \cdot \frac{178.5}{X+143.5}$$



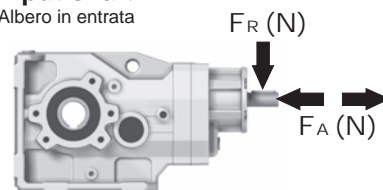
| n_2 | FA | FR | n_2 | FA | FR | n_2 | FA | FR |
|-------|------|------|-------|------|------|-------|------|------|
| 300 | 1360 | 6800 | 140 | 1480 | 7400 | 70 | 1720 | 8600 |
| 250 | 1400 | 7000 | 120 | 1520 | 7600 | 40 | 1840 | 9200 |
| 200 | 1440 | 7200 | 85 | 1560 | 7800 | 15 | 1920 | 9600 |

On request reinforced bearings to increase loads.

A richiesta cuscinetti rinforzati per aumentare i carichi.

Input shaft

Albero in entrata



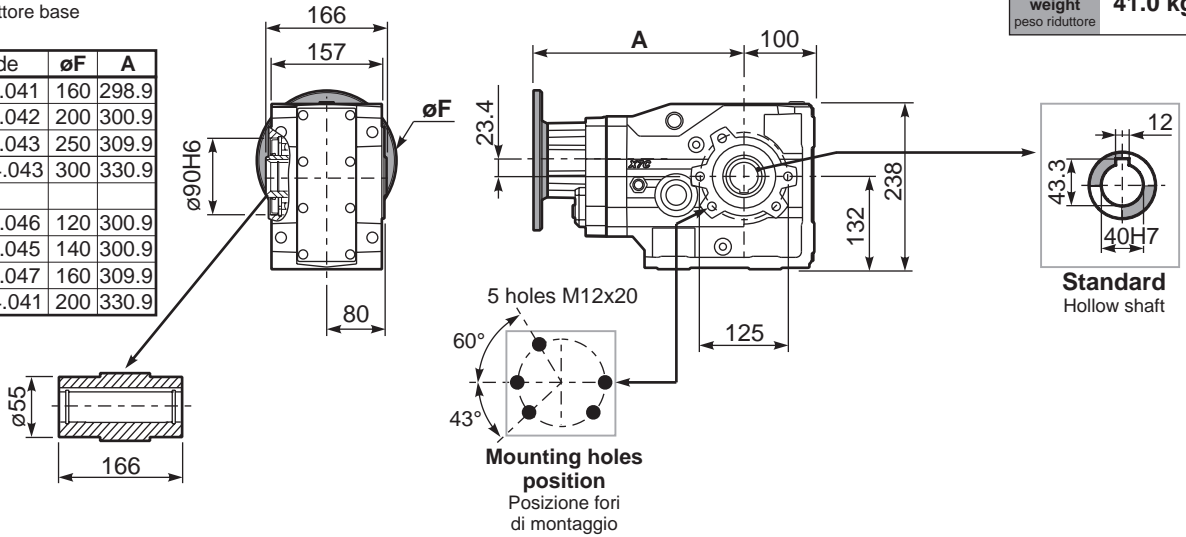
| n_1 | FA | FR |
|-------|-----|------|
| 1400 | 400 | 2000 |
| 900 | 440 | 2200 |
| 500 | 440 | 2200 |

tab. 2

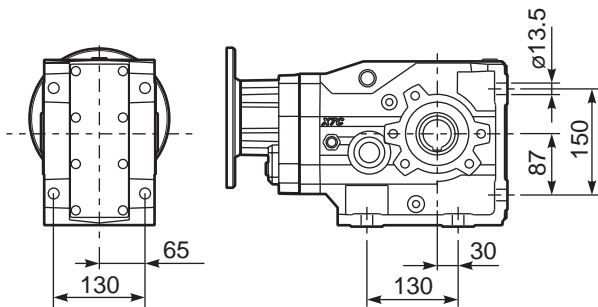
PX73CC... Basic Gearbox
Riduttore base

Gearbox weight
peso riduttore **41.0 kg**

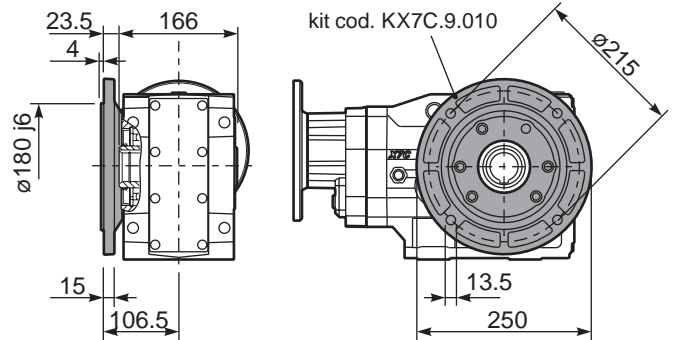
| M. flanges | Kit code | øF | A |
|-------------------|------------|-----|-------|
| 71B5 | K023.4.041 | 160 | 298.9 |
| 80/90B5 | K023.4.042 | 200 | 300.9 |
| 100/112B5 | K023.4.043 | 250 | 309.9 |
| 132B5 | KC51.4.043 | 300 | 330.9 |
| 80B14 | K085.4.046 | 120 | 300.9 |
| 90B14 | K085.4.045 | 140 | 300.9 |
| 100/112B14 | K085.4.047 | 160 | 309.9 |
| 132B14 | KC51.4.041 | 200 | 330.9 |



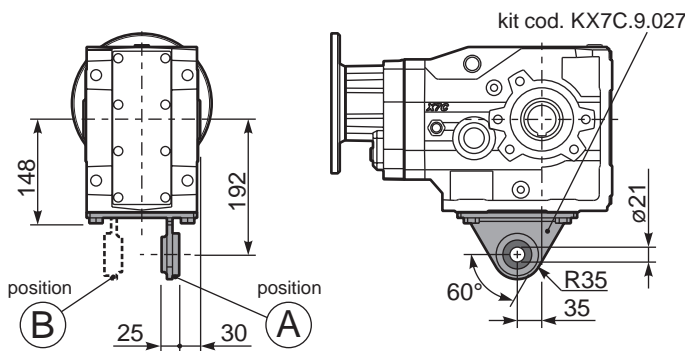
PX73C...FB.. Feet
Piedini



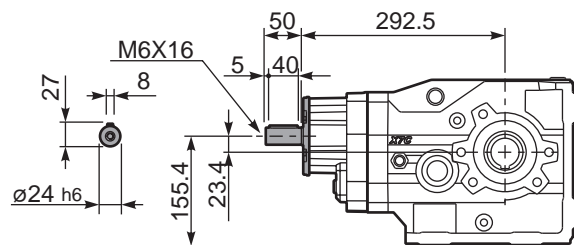
PX73C...-F4.. Output flange
Flangia uscita



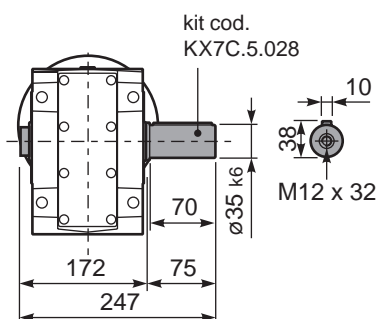
PX73C...BR.. Reaction Arm
Braccio di reazione



RX73C... Input shaft
Albero in entrata



PX73CA... Single shaft
Albero lento semplice



PX73CB... Double shaft
Albero lento bisp.

