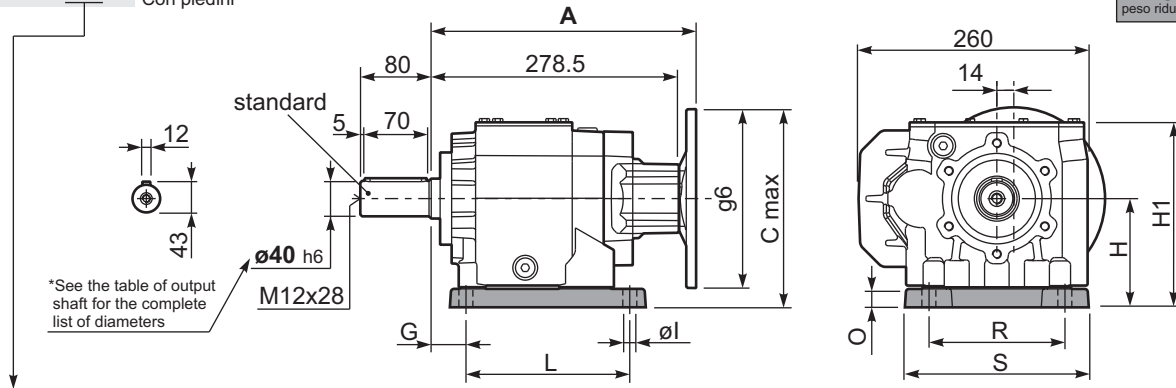


P813C**S7**... With feet
Con piedini

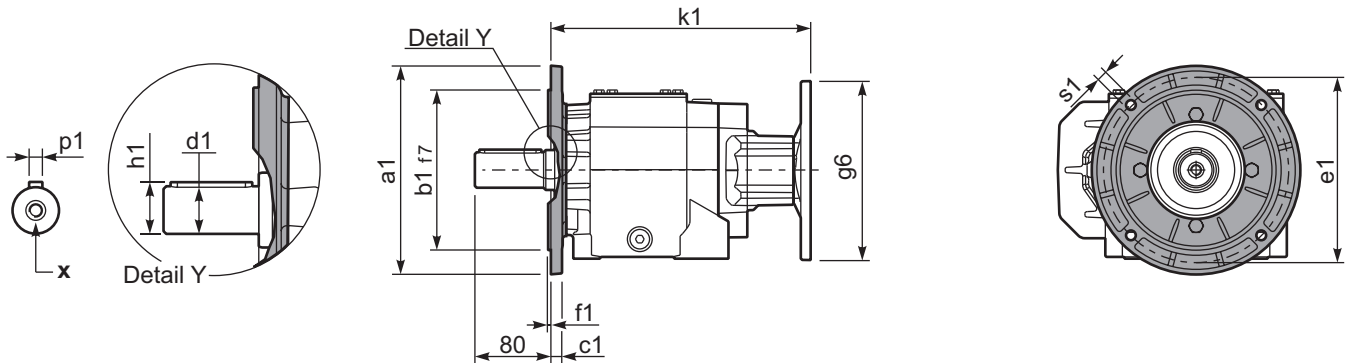
Gearbox weight With flange 34.8 kg
peso riduttore With feet 40.3 kg



Feet / piedini

Feet Code	Market reference	G	H	R	L	S	H1	O	øl	B5 max. Flange	kit code
B5	512/3	25	155	225	156	270	245.5	30	18	-	KC81.9.022
S7	77	35	140	170	205	230	230.5	30	17.5	-	KC81.9.024

P813C-**F**... Output flanges
flange di uscita



*Available output shaft / Alberi di uscita

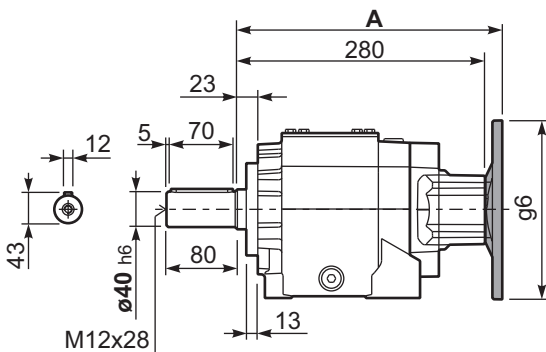
	Shaft - d1	p1	h1	x
Standard	ø 40x80	12	43	M12x28
On request A richiesta	ø 45x90	14	48.5	M14x34

Available output flanges / flange di uscita

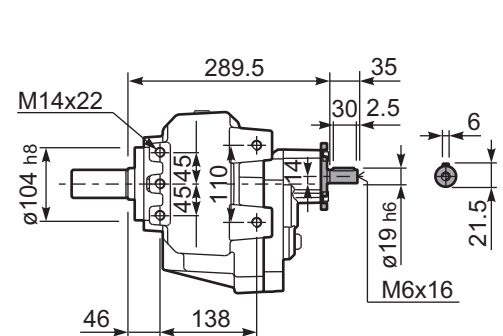
a1 ø	b1	c1	e1	f1	s1	kit code
250	180	13	215	4	14	KC81.9.013
300	230	16	265	4	14	KC81.9.014
-	-	-	-	-	-	-

With flange and feet only on request. Ask for compatibility

P813C-**N**... Basic gearbox
Riduttore base



R813C-**N**... Input Shaft
Albero in entrata



B5 Motor Flanges	A	C _{max}	g6	k1	kit code
63 B5	299	225	140	299	K063.4.041
71 B5	297	235	160	297	K063.4.042
80/90 B5	299	255	200	299	K063.4.043
100/112 B5	314	280	250	314	KC40.4.043

B14 Motor Flanges	A	C _{max}	g6	k1	kit code
71 B14	297	207.5	105	297	K063.4.047
80 B14	299	215	120	299	K063.4.046
90 B14	299	225	140	299	K063.4.041
100/112 B14	314	235	160	314	KC40.4.041



QUICK SELECTION / Selezione veloce

input speed (n₁) = 1400 min⁻¹

Output Speed n ₂ [min ⁻¹]	Ratio i	Motor power P _{1M} [kW]	Output torque M _{2M} [Nm]	Service factor f.s.	Nominal power P _{1R} [kW]	Nominal torque M _{2R} [Nm]	Available B5 motor flanges					Available B14 motor flanges				Output Shaft 	Ratios code
							-B	-C	-D	-E	-F	-Q	-R	-T	-U		
							63	71	80	90	100	71	80	90	100		
22.3	62.76	2.2	874	1.0	2.15	865	B					C	C			191213	01
20.2	69.28	2.2	965	0.9	1.95	865	B					C	C			191212	02
19.2	72.75	1.5	698	1.2	1.85	865	B					C	C			171213	03
17.4	80.29	1.5	771	1.1	1.68	865	B					C	C			171212	04
16.4	85.39	1.5	820	1.1	1.58	865	B					C	C			151213	05
14.9	94.25	1.5	905	1.0	1.43	865	B					C	C			151212	06
13.7	101.92	1.1	715	1.2	1.32	865	B					C	C			131213	07
12.4	112.50	1.1	789	1.1	1.20	865	B					C	C			131212	08
11.9	117.29	1.1	822	1.1	1.15	865	B					C	C			151210	09
10.1	139.13	1.1	976	0.9	0.97	865	B					C	C			101213	10
9.1	153.56	0.75	739	1.2	0.88	865	B					C	C			101212	11
7.7	181.57	0.75	873	1.0	0.74	865	B					C	C			91213	12
7.0	200.42	0.55	711	1.2	0.67	865	B					C	C			91212	13
5.6	249.41	0.55	885	1.0	0.54	865	B					C	C			91210	14
4.3	329.33	0.37	781	1.1	0.41	865	B					C	C			71210	15

The dynamic efficiency is **0.94** for all ratios

Motor Flanges Available
Flange Motore Disponibili

Supplied with Reduction Bushing
Fornito con Bussola di Riduzione

Available on Request without reduction bushing
Disponibile a Richiesta senza Bussola di Riduzione

Motor Flange Holes Position
Posizione Fori Flangia Motore

EN Unit **813C** is supplied with synthetic oil for lifetime lubrication, no maintenance is necessary. See table 1 for lubrication and recommended quantity. In table 2 please see possible radial loads and axial loads on the gearbox.

I Il riduttore **813C** viene fornito completo di olio sintetico per la lubrificazione permanente e non necessita di alcuna manutenzione. Vedi tab.1 per oli e quantità consigliati. In tab.2 sono presenti i carichi radiali e assiali applicabili al riduttore.

D Das Getriebe **813C** ist mit synthetischem Öl gefüllt und ist lebensdauergeschmiert. In Tabelle 1 ist die Schmiermenge und das empfohlene Schmiermittel angegeben. In Tabelle 2 sind die zulässigen Radial - und Axialbelastungen des Getriebes aufgeführt.

F Le réducteur **813C** est fourni complet avec de l'huile synthétique pour la lubrification permanente et ne nécessite aucun entretien. Voir tableau 1 concernant les huiles et les quantités conseillées. Les charges radiales et axiales applicables au réducteur sont précisées dans le tableau 2.

E El reductor tamaño **813C** se suministra, lubricado de por vida con aceite sintético y no requieren mantenimiento alguna. Ver tabla 1, para cantidades y aceites recomendados. En la tabla 2, se encuentran las cargas radiales y axiales admitidas por el reductor.

B3	B6	B7	B8	V5	V6	V8
1.60 LT	2.20 LT	1.80 LT	1.70 LT	2.80 LT	1.90 LT	Ask
SHELL Omala S4 WE 320				ENI Telium VSF 320		

For all details on lubrication and plugs check our website [www.813c.com](#) **tab. 1**
Per maggiori dettagli su lubrificazione e tappi olio vedi il nostro sito web

RADIAL AND AXIAL LOADS

Output shaft
Albero di uscita

$$F_{eq} = F_R \cdot \frac{78}{X+38}$$

n ₂	FA	FR	n ₂	FA	FR	n ₂	FA	FR
300	1300	6500	140	1780	8900	70	2200	11000
250	1420	7100	120	1900	9500	40	2360	11800
200	1600	8000	85	2040	10200	15	2400	12000

Input shaft
Albero in entrata

n ₁	FA	FR
1400	400	2000
900	440	2200
500	440	2200

tab. 2