

# 无刷直流减速电机

DC BRUSHLESS GEAR MOTOR

60 高压电机 60 High Gear Motor

10, 15, 25W □ 60mm



## 电机性能参数 Motor Performance Parameters

| 型号 Model          | 电压 Voltage V | 频率 Frequency Hz | 额定功率 Rated Power W | 额定电流 Rated Current A | 额定转速 Rated Speed RPM | 额定力矩 Rated Torque N.m | 防护等级 Grade Protection IP |
|-------------------|--------------|-----------------|--------------------|----------------------|----------------------|-----------------------|--------------------------|
| G2BLD10-220GN-30S | 220~230      | 50/60           | 10                 | 0.2                  | 3000                 | 0.03                  | 44                       |
|                   | 110~120      | 50/60           | 10                 | 0.45                 | 3000                 | 0.03                  | 44                       |
| G2BLD15-220GN-30S | 220~230      | 50/60           | 15                 | 0.35                 | 3000                 | 0.047                 | 44                       |
|                   | 110~120      | 50/60           | 15                 | 0.65                 | 3000                 | 0.047                 | 44                       |
| G2BLD25-220GN-30S | 220~230      | 50/60           | 25                 | 0.45                 | 3000                 | 0.08                  | 44                       |
|                   | 110~120      | 50/60           | 25                 | 0.75                 | 3000                 | 0.08                  | 44                       |

• 电机电压、功率及转速可在配件尺寸等条件下根据客户要求定制。

Motor voltage, power and speed will be customized according to his requestment under the allowed circumstance of adoptable dimension.

## 种类 Type

### • 电动机 Motor

| 机型 Type            | 型号 Model          |                   |
|--------------------|-------------------|-------------------|
|                    | 齿轮轴型 Pinion Shaft | 圆轴型 Round Shaft   |
| 导线型 Lead Wire Type | G2BLD10-220GN-30S | G2BLD10-220A1-30S |
|                    | G2BLD15-220GN-30S | G2BLD15-220A1-30S |
|                    | G2BLD25-220GN-30S | G2BLD25-220A1-30S |

### • 平行轴减速器 ( 另售 ) Parallel Shaft Gearhead ( Sold Separately )

| 减速机种类 Gearhead Type          | 减速器型号 Gearhead Model              | 减速比 Gear Ratio  |
|------------------------------|-----------------------------------|---|
| 长寿命、低噪音 Long Life, Low Noise | 2GN □ K                           | 3, 3.6, 5, 6, 7.5, 9, 12.5, 15, 18, 25, 30, 36, 50, 60, 75, 90, 100, 120, 150, 180, 200 |
|                              | 2GN10XK( 中间减速器 Decimal Gearhead ) |   |

减速器型号的□中为减速比的数值

Enter the gear ratio in the box ( □ ) within the model name.

## 装有减速器时的容许转矩 Allowable Torque When Being With Gearhead

- 减速器、中间减速器另售
- 减速器型号的□中为减速比的数值
- ■表示与电动机同一方向运转，其它则为相反方向。
- 转速是以电动机的额定转速为基准除以减速比而算出来的数值。实际转速将随负载大小变化而比所示数值减少 2%~20% 左右。
- 希望以大于下表的减速比进行进一步减速时，可在电动机与减速器之间安装减速比为 10 的中间减速器。这时的容许转矩为 3N·m
- Gearhead and mid-gearbox can be sold separately.
- Enter the gear ratio in the box ( □ ) within the model name.
- ■ Indicates the same rotating direction of the motor while the others rotate in the opposite direction.
- The speed is calculated by dividing the motor's synchronous speed by the gear ratio. The actual speed is 2%~20% less than the displayed value, depending on the size of the load.
- To reduce the speed beyond the gear ratio in the table, attach a mid-gearbox (gear ratio:10) between the gearhead and motor. In that case, the permissible torque is 3N·m.

## 容许力矩单位 Allowance Torque Unit: 上段 Upside (N-m) / 下段 Belowside (kgf-cm)

| 减速比 Gear Ratio                 | 3    | 3.6  | 5    | 6    | 7.5  | 9   | 12.5 | 15   | 18  | 25   | 30   | 36   | 50   | 60   | 75   | 90   | 100  | 120  | 150  | 180  | 200  |
|--------------------------------|------|------|------|------|------|-----|------|------|-----|------|------|------|------|------|------|------|------|------|------|------|------|
| 输出轴转速 r/min Output shaft speed | 1000 | 830  | 600  | 500  | 400  | 330 | 240  | 200  | 166 | 120  | 100  | 83   | 60   | 50   | 40   | 33   | 30   | 25   | 20   | 16   | 15   |
| GU 允许力矩 N·m Allowance torque   | 0.23 | 0.28 | 0.39 | 0.47 | 0.58 | 0.7 | 0.97 | 1.16 | 1.4 | 1.73 | 2.07 | 2.48 | 3.00 | 3.00 | 3.00 | 3.00 | 3.00 | 3.00 | 3.00 | 3.00 | 3.00 |

### 60 高压电机 60 High Gear Motor

#### 容许悬挂负载·容许轴向负载 Permissible Overhung Load and Thrust Load

电动机 (圆轴型) → 28 页 Motor (Round Shaft) → P28

减速器 → 28 页 Gearhead → P28

#### 减速器的容许负载惯性量 J Permissible Load Inertia J for Gearhead

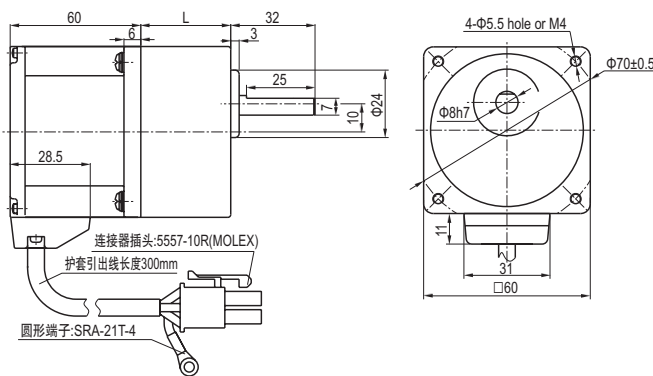
→ 28 页 → P28

#### 外形图 (单位 mm) Dimensions (Unit mm)

减速器附有安装用螺丝 Mounting screws are included with gearhead.

##### • 导线型 Lead Wire Type

重量 Weight: 电动机 Motor: 0.5kg 减速器 Gearhead: 0.48kg



| 电动机型号<br>Motor Model | 减速器型号<br>Gearhead type | 减速比<br>Gear Ratio | L 尺寸<br>Dimension |
|----------------------|------------------------|-------------------|-------------------|
| G2BLD10-220GN-30S    | 2GN □ K                | 3~18              | 32                |
|                      |                        | 25~200            | 40                |

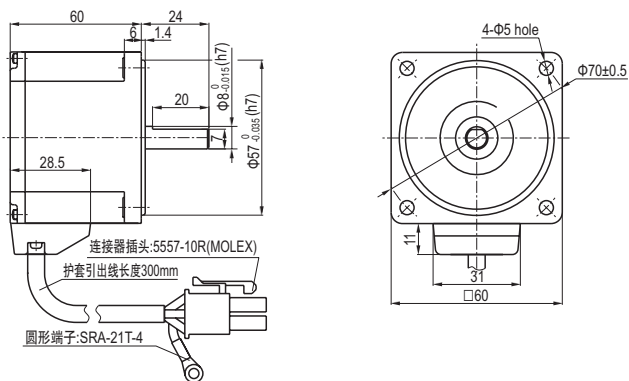
减速器型号的□中为减速比的数值

Enter the gear ratio in the box (□) within the model name.

##### • 圆轴型的转轴部分 Shaft Section of Round Shaft Type

除重量及轴部外电动机外形与齿轮轴型相同。

Excluding weight and the shaft section motor shape are the same as those of the pinion shaft type.

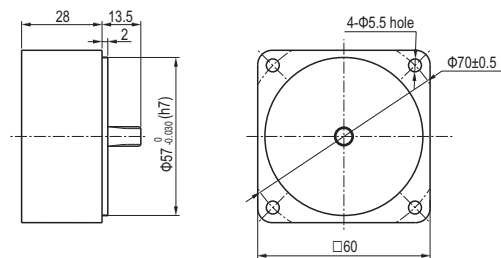


##### • 中间减速器 Mid-gearbox

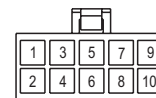
可安装在 GN 齿轮轴型上

Can be connected to GN pinion shaft type 2GN10XK

重量 Weight: 0.2kg



##### • 接线插孔对应信号说明 Wire plughole corresponding signal explanation



| 排线对应的意义  |          |          |          |          |          |   |          |          |          |
|----------|----------|----------|----------|----------|----------|---|----------|----------|----------|
| 1        | 2        | 3        | 4        | 5        | 6        | 7 | 8        | 9        | 10       |
| 蓝<br>(粗) | 白<br>(细) | 黄<br>(粗) | 黄<br>(细) | 白<br>(粗) | 蓝<br>(细) |   | 金属<br>丝网 | 红<br>(细) | 黑<br>(细) |
| W        | Hu       | U        | Hv       | V        | Hw       |   |          | Vcc+5V   | GND      |

# 无刷直流减速电机

## DC BRUSHLESS GEAR MOTOR

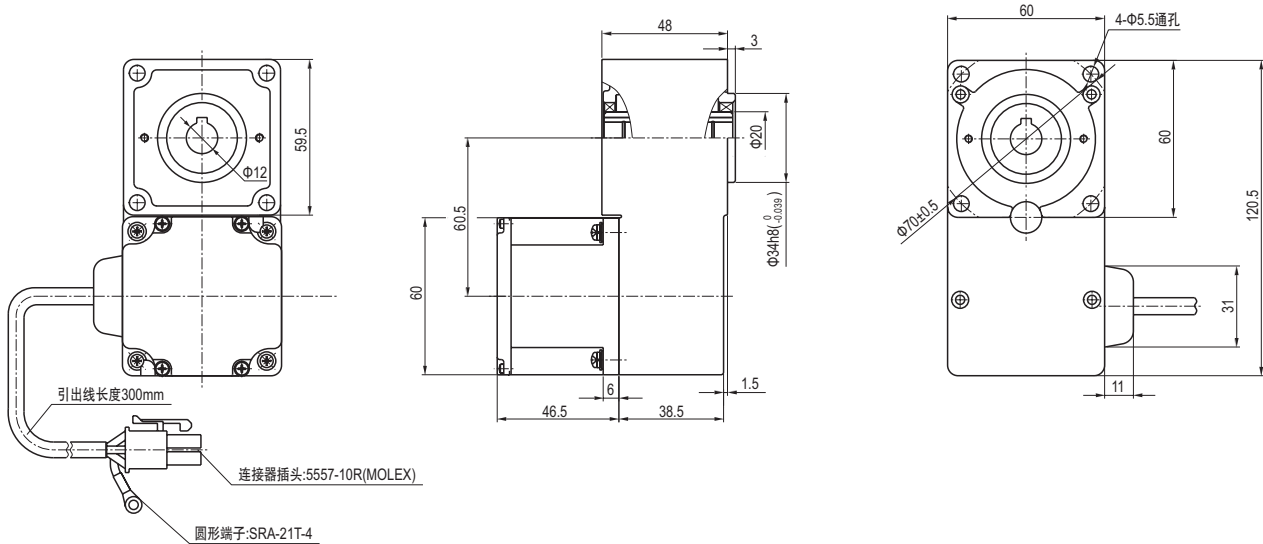
### 60 高压 L 型减速器 60 High Pressure L Type Reducer

#### 外形图 (单位 mm) Dimensions(Unit mm)

减速器附有安装用螺丝 Mounting screws are included with gearhead.

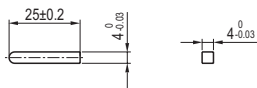
#### • 导线型 Lead Wire Type

重量 Weight: 电动机 Motor: 0.9kg 减速器 Gearhead: 0.48kg



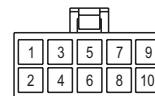
#### • 键·键槽 (减速器附件)

Key · Keyway (The Key Is Included With The Gearhead)



#### • 接线插孔对应信号说明

Wire plughole corresp-onding signal explanation



| 排线对应的意义  |          |          |          |          |          |   |          |          |          |
|----------|----------|----------|----------|----------|----------|---|----------|----------|----------|
| 1        | 2        | 3        | 4        | 5        | 6        | 7 | 8        | 9        | 10       |
| 蓝<br>(粗) | 白<br>(细) | 黄<br>(粗) | 黄<br>(细) | 白<br>(粗) | 蓝<br>(细) |   | 金属<br>丝网 | 红<br>(细) | 黑<br>(细) |
| W        | Hu       | U        | Hv       | V        | Hw       |   |          | Vcc+5V   | GND      |