

PM DC PLANETARY GEAR MOTOR (Ring Gear Material: Metal and Powder Metal)

**PGM36-30K/36M57** 36mm OD Planetary Gearbox,  
Permissible Load Range: 0.3N.m~3.0N.m



● Motor Technical Data

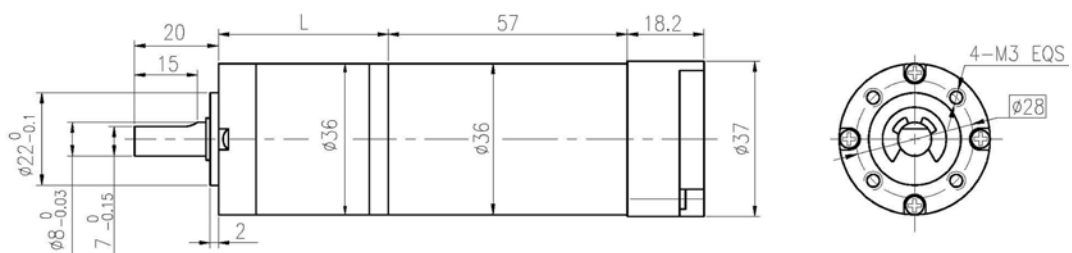
| 电机型号<br>TYPE | 额定电压<br>Rated voltage<br>VDC | 空载转速<br>No-load speed<br>r/min | 空载电流<br>No-load current<br>mA | 额定转速<br>Rated speed<br>r/min | 额定转矩<br>Rated torque<br>mN.m | 输出功率<br>Output power<br>W | 额定电流<br>Rated current<br>A | 堵转力矩<br>Stall torque<br>mN.m | 堵转电流<br>Stall current<br>A |
|--------------|------------------------------|--------------------------------|-------------------------------|------------------------------|------------------------------|---------------------------|----------------------------|------------------------------|----------------------------|
| 36M57-2442   | 24                           | 4200                           | 120                           | 3600                         | 19                           | 7                         | 0.52                       | 97                           | 2.8                        |

● Gear Motor Technical Data

配置 36M57-2442 直流电机 (36M57-2442 DC Motor)

| 减速比<br>Reduction ratio                                | 3.7   | 5.2   | 14   | 19   | 27   | 51   | 71   | 100  | 139  | 181  | 218  | 253  | 305  | 354  |
|---|-------|-------|------|------|------|------|------|------|------|------|------|------|------|------|
| 减速级数<br>Number of gear trains                         | 1     | 1     | 2    | 2    | 2    | 3    | 3    | 3    | 3    | 4    | 4    | 4    | 4    | 4    |
| 减速器长度(L)<br>Length(L) mm                              | 26.5  | 26.5  | 33.6 | 33.6 | 33.6 | 40.5 | 40.5 | 40.5 | 40.5 | 47.4 | 47.4 | 47.4 | 47.4 | 47.4 |
| 空载转速<br>No-load speed r/min                           | 1132  | 811   | 300  | 221  | 156  | 82   | 59   | 42   | 30   | 23   | 19   | 17   | 14   | 12   |
| 额定转速<br>Rated speed r/min                             | 970   | 695   | 257  | 189  | 133  | 71   | 51   | 36   | 26   | 20   | 17   | 14   | 12   | 8.5  |
| 额定转矩<br>Rated torque N.m                              | 0.063 | 0.089 | 0.22 | 0.29 | 0.42 | 0.71 | 0.98 | 1.4  | 1.9  | 2.2  | 2.7  | 3    | 3    | 3    |
| 最大瞬间允许负载<br>Max. permissible load in a short time N.m | 1.0   | 1.0   | 3.5  | 3.5  | 3.5  | 7.5  | 7.5  | 7.5  | 7.5  | 9    | 9    | 9    | 9    | 9    |

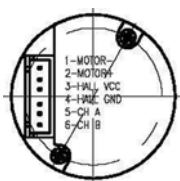
● Dimensions



● Magnetic Encoder

model: CBM36-4 2channels, CW/CCW, 4PPR

Flat cable length 350mm



1. MOTOR-
2. MOTOR+
3. HALL SENSOR Vcc
4. HALL SENSOR GND
5. HALL SENSOR A Vout
6. HALL SENSOR B Vout