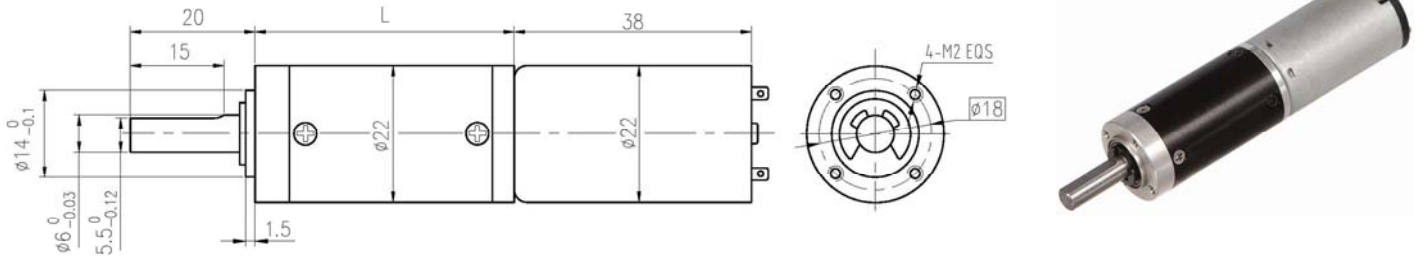


PM DC Planetary Gear Motor (Ring Gear Material: Metal)

PGM22-10K/22M38B 22mm OD Planetary Gearbox,
Permissible Load Range: 0.1N.m~1.0N.m

• Dimensions



• Motor Technical Data

电机型号 TYPE	额定电压 Rated voltage VDC	空载转速 No-load speed r/min	空载电流 No-load current mA	额定转速 Rated speed r/min	额定转矩 Rated torque mN.m	输出功率 Output power W	额定电流 Rated current mA	堵转力矩 Stall torque mN.m	堵转电流 Stall current A
22M38B-1260	12	6000	100	5000	3	1.56	250	17	0.87
22M38B-12100	12	10000	150	8700	3	2.7	500	28	2.3

• Gear Motor Technical Data

22M38B-1260 (22M38B-1260 DC Motor)

减速比 Reduction ratio	3.7	5.2	14	19	27	51	71	100	139	189	264	369	516
减速级数 Number of gear trains	1	1	2	2	2	3	3	3	3	4	4	4	4
减速器长度(L) Length(L) mm	24.4	24.4	33.0	33.0	33.0	41.5	41.5	41.5	41.5	49.8	49.8	49.8	49.8
空载转速 No-load speed r/min	1617	1158	429	316	222	118	85	60	43	32	23	16	12
额定转速 Rated speed r/min	1388	994	357	263	185	98	70	50	36	26	19	14	9.7
额定转矩 Rated torque N.m	0.010	0.014	0.034	0.046	0.066	0.11	0.16	0.22	0.30	0.37	0.51	0.72	1.0
最大瞬时可允许负载 Max. permissible load in a short time N.m	0.3	0.3	1.2	1.2	1.2	2.5	2.5	2.5	2.5	3	3	3	3

22M38B-12100 (22M38B-12100 DC Motor)

减速比 Reduction ratio	3.7	5.2	14	19	27	51	71	100	139	189	264	369	516
减速级数 Number of gear trains	1	1	2	2	2	3	3	3	3	4	4	4	4
减速器长度(L) Length(L) mm	24.4	24.4	33.0	33.0	33.0	41.5	41.5	41.5	41.5	49.8	49.8	49.8	49.8
空载转速 No-load speed r/min	2695	1931	714	526	370	196	141	100	72	53	38	27	19
额定转速 Rated speed r/min	2480	1776	621	458	322	171	123	87	63	46	33	24	17
额定转矩 Rated torque N.m	0.010	0.014	0.034	0.046	0.066	0.11	0.16	0.22	0.30	0.37	0.51	0.72	1.0
最大瞬时可允许负载 Max. permissible load in a short time N.m	0.3	0.3	1.2	1.2	1.2	2.5	2.5	2.5	2.5	3	3	3	3