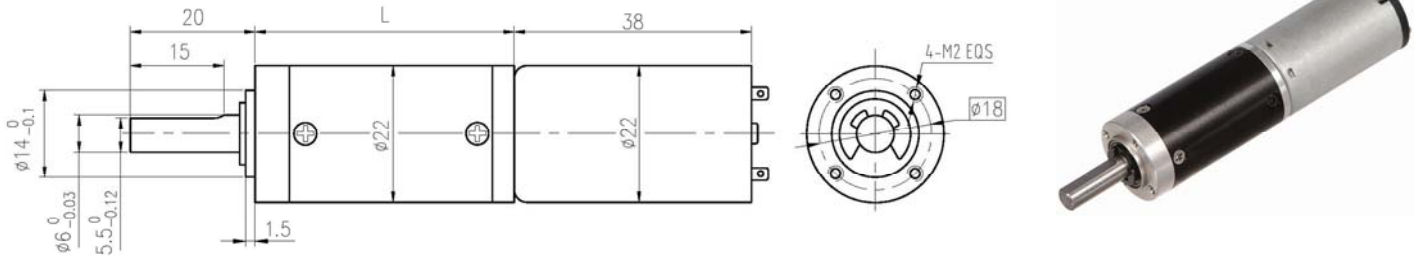


PM DC Planetary Gear Motor (Ring Gear Material: Metal)

**PGM22-10K/22M38B** 22mm OD Planetary Gearbox,  
Permissible Load Range: 0.1N.m~1.0N.m

• Dimensions



• Motor Technical Data

电机型号 TYPE	额定电压 Rated voltage VDC	空载转速 No-load speed r/min	空载电流 No-load current mA	额定转速 Rated speed r/min	额定转矩 Rated torque mN.m	输出功率 Output power W	额定电流 Rated current mA	堵转力矩 Stall torque mN.m	堵转电流 Stall current A
22M38B-1260	12	6000	100	5000	3	1.56	250	17	0.87
22M38B-12100	12	10000	150	8700	3	2.7	500	28	2.3

• Gear Motor Technical Data

22M38B-1260 (22M38B-1260 DC Motor)

减速比 Reduction ratio	3.7	5.2	14	19	27	51	71	100	139	189	264	369	516
减速级数 Number of gear trains	1	1	2	2	2	3	3	3	3	4	4	4	4
减速器长度(L) Length(L) mm	24.4	24.4	33.0	33.0	33.0	41.5	41.5	41.5	41.5	49.8	49.8	49.8	49.8
空载转速 No-load speed r/min	1617	1158	429	316	222	118	85	60	43	32	23	16	12
额定转速 Rated speed r/min	1388	994	357	263	185	98	70	50	36	26	19	14	9.7
额定转矩 Rated torque N.m	0.010	0.014	0.034	0.046	0.066	0.11	0.16	0.22	0.30	0.37	0.51	0.72	1.0
最大瞬时可允许负载 Max. permissible load in a short time N.m	0.3	0.3	1.2	1.2	1.2	2.5	2.5	2.5	2.5	3	3	3	3

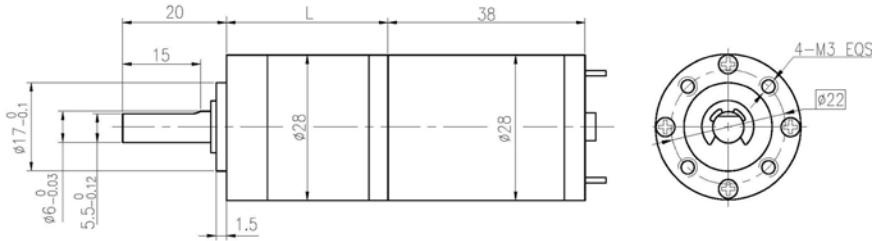
22M38B-12100 (22M38B-12100 DC Motor)

减速比 Reduction ratio	3.7	5.2	14	19	27	51	71	100	139	189	264	369	516
减速级数 Number of gear trains	1	1	2	2	2	3	3	3	3	4	4	4	4
减速器长度(L) Length(L) mm	24.4	24.4	33.0	33.0	33.0	41.5	41.5	41.5	41.5	49.8	49.8	49.8	49.8
空载转速 No-load speed r/min	2695	1931	714	526	370	196	141	100	72	53	38	27	19
额定转速 Rated speed r/min	2480	1776	621	458	322	171	123	87	63	46	33	24	17
额定转矩 Rated torque N.m	0.010	0.014	0.034	0.046	0.066	0.11	0.16	0.22	0.30	0.37	0.51	0.72	1.0
最大瞬时可允许负载 Max. permissible load in a short time N.m	0.3	0.3	1.2	1.2	1.2	2.5	2.5	2.5	2.5	3	3	3	3

PM DC Planetary Gear Motor (Ring Gear Material: Metal and Powder Metal)

**PGM-28-10K/28M38**      28mm OD Planetary Gearbox,  
Permissible Load Range: 0.1N.m~1.0N.m

● Dimensions



● Motor Technical Data

电机型号 TYPE	额定电压 Rated voltage VDC	空载转速 No-load speed r/min	空载电流 No-load current mA	额定转速 Rated speed r/min	额定转矩 Rated torque mN.m	输出功率 Output power W	额定电流 Rated current mA	堵转力矩 Stall torque mN.m	堵转电流 Stall current A
28M38-1240	12	4000	80	2600	7.0	1.86	350	20	0.75
28M38-1250	12	5000	100	3450	7.0	2.48	370	21.5	0.90
28M38-2450	24	5000	60	4000	6.9	2.87	200	22	0.60

● Gear Motor Technical Data

配置 28M38-1240 直流电机 (28M38-1240 DC Motor)

减速比 Reduction ratio	3.7	5.2	14	19	27	51	71	100	139	189	264	369
减速级数 Number of gear trains	1	1	2	2	2	3	3	3	3	4	4	4
减速器长度(L) Length(L) mm	22.6	22.6	29.2	29.2	29.2	35.6	35.6	35.6	35.6	42.0	42.0	42.0
空载转速 No-load speed r/min	1078	772	286	211	148	78	56	40	29	21	15	11
额定转速 Rated speed r/min	701	502	186	137	96	51	37	26	19	14	10	7
额定转矩 Rated torque N.m	0.023	0.033	0.079	0.11	0.15	0.26	0.36	0.51	0.71	0.86	1	1
最大瞬间允许负载 Max. permissible load in a short time N.m	0.3	0.3	1.2	1.2	1.2	2.4	2.4	2.4	2.4	3	3	3

配置 28M38-1250 直流电机 (28M38-1250 DC Motor)

减速比 Reduction ratio	3.7	5.2	14	19	27	51	71	100	139	189	264	369
减速级数 Number of gear trains	1	1	2	2	2	3	3	3	3	4	4	4
减速器长度(L) Length(L) mm	22.6	22.6	29.2	29.2	29.2	35.6	35.6	35.6	35.6	42.0	42.0	42.0
空载转速 No-load speed r/min	1348	965	357	263	185	98	70	50	36	26	19	14
额定转速 Rated speed r/min	930	666	246	182	128	68	49	35	25	18	13	9.3
额定转矩 Rated torque N.m	0.023	0.033	0.079	0.11	0.15	0.26	0.36	0.51	0.71	0.86	1	1
最大瞬间允许负载 Max. permissible load in a short time N.m	0.3	0.3	1.2	1.2	1.2	2.4	2.4	2.4	2.4	3	3	3

配置 28M38-2450 直流电机 (28M38-2450 DC Motor)

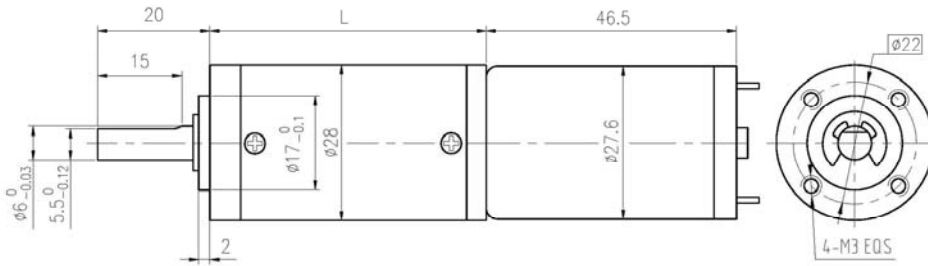
减速比 Reduction ratio	3.7	5.2	14	19	27	51	71	100	139	189	264	369
减速级数 Number of gear trains	1	1	2	2	2	3	3	3	3	4	4	4
减速器长度(L) Length(L) mm	22.6	22.6	29.2	29.2	29.2	35.6	35.6	35.6	35.6	42.0	42.0	42.0
空载转速 No-load speed r/min	1348	965	357	263	185	98	70	50	36	26	19	14
额定转速 Rated speed r/min	1078	772	286	211	148	78	56	40	29	21	15	11
额定转矩 Rated torque N.m	0.023	0.032	0.078	0.11	0.15	0.26	0.36	0.50	0.70	0.85	1	1
最大瞬间允许负载 Max. permissible load in a short time N.m	0.3	0.3	1.2	1.2	1.2	2.4	2.4	2.4	2.4	3	3	3

PM DC Planetary Gear Motor (Ring Gear Material: Metal)

PGM28-10K/28M47

28mm OD Planetary Gearbox,  
Permissible Load Range: 0.3N.m~3.0N.m

• Dimensions



• Motor Technical Data

电机型号 TYPE	额定电压 Rated voltage VDC	空载转速 No-load speed r/min	空载电流 No-load current mA	额定转速 Rated speed r/min	额定转矩 Rated torque mN.m	输出功率 Output power W	额定电流 Rated current mA	堵转力矩 Stall torque mN.m	堵转电流 Stall current A
28M47-2450	24	5000	80	3800	7	2.8	230	25	0.7
28M47-2467	24	6700	100	5100	15	8.0	460	55	1.8

• Gear Motor Technical Data

28M47-2450 (28M47-2450 DC Motor)

减速比 Reduction ratio	3.7	5.2	14	19	27	51	71	100	139	189	264	369	516	720
减速级数 Number of gear trains	1	1	2	2	2	3	3	3	3	4	4	4	4	4
减速器长度(L) Length(L) mm	31.0	31.0	40.1	40.1	40.1	49.0	49.0	49.0	49.0	57.9	57.9	57.9	57.9	57.9
空载转速 No-load speed r/min	1348	965	357	263	185	98	70	50	36	26	19	14	9.7	6.9
额定转速 Rated speed r/min	1024	734	271	200	141	75	54	38	27	20	14	10	7.4	5.3
额定转矩 Rated torque N.m	0.02	0.03	0.08	0.11	0.15	0.26	0.36	0.51	0.71	0.86	1.2	1.7	2.4	3
最大瞬间允许负载 Max. permissible load in a short time N.m	1.0	1.0	3.5	3.5	3.5	7.5	7.5	7.5	7.5	9	9	9	9	9

28M47-2467 (28M47-2467 DC Motor)

减速比 Reduction ratio	3.7	5.2	14	19	27	51	71	100	139	189	264	369	516
减速级数 Number of gear trains	1	1	2	2	2	3	3	3	3	4	4	4	4
减速器长度(L) Length(L) mm	31.0	31.0	40.1	40.1	40.1	49.0	49.0	49.0	49.0	57.9	57.9	57.9	57.9
空载转速 No-load speed r/min	1806	1293	479	353	248	131	94	67	48	35	25	18	13
额定转速 Rated speed r/min	1375	985	364	268	189	100	72	51	37	27	19	14	9.9
额定转矩 Rated torque N.m	0.05	0.07	0.17	0.23	0.33	0.56	0.78	1.1	1.5	1.8	2.6	3	3
最大瞬间允许负载 Max. permissible load in a short time N.m	1.0	1.0	3.5	3.5	3.5	7.5	7.5	7.5	7.5	9	9	9	9

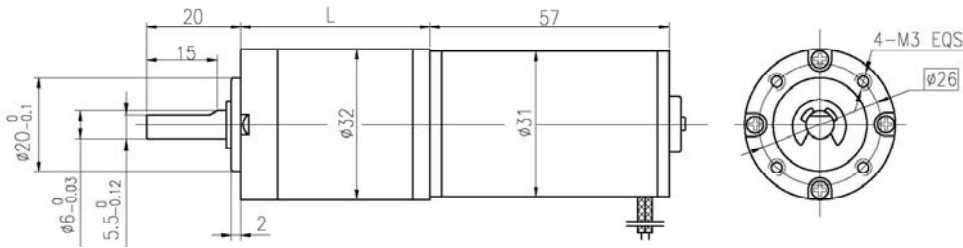
PM DC Planetary Gear Motor (Ring Gear Material: Metal)

PGM32-30K/31M57

32mm OD Planetary Gearbox,  
Permissible Load Range: 0.3N.m~3.0N.m

- Standard output shaft OD 6mm, OD 8mm optional.

• Dimensions



• Motor Technical Data

电机型号 TYPE	额定电压 Rated voltage VDC	空载转速 No-load speed r/min	空载电流 No-load current mA	额定转速 Rated speed r/min	额定转矩 Rated torque mN.m	输出功率 Output power W	额定电流 Rated current mA	堵转力矩 Stall torque mN.m	堵转电流 Stall current A
31M57-2450	24	5000	100	3780	20	7.8	600	82	2.0
31M57-2470	24	7000	130	5500	22	12.4	750	103	3.3

• Gear Motor Technical Data

31M57-2450 (31M57-2450 DC Motor)

减速比 Reduction ratio	3.7	5.2	14	19	27	51	71	100	139	182	219	254
减速级数 Number of gear trains	1	1	2	2	2	3	3	3	3	4	4	4
减速器长度(L) Length(L) mm	25.7	25.7	32.8	32.8	32.8	39.7	39.7	39.7	39.7	46.6	46.6	46.6
空载转速 No-load speed r/min	1351	962	357	263	185	98	70	50	36	27	23	20
额定转速 Rated speed r/min	1022	727	270	199	140	74	53	38	27	21	17	15
额定转矩 Rated torque N.m	0.07	0.10	0.25	0.34	0.48	0.82	1.1	1.6	2.2	2.6	3	3
最大瞬间允许负载 Max. permissible load in a short time N.m	1.0	1.0	3.5	3.5	3.5	7.5	7.5	7.5	7.5	9	9	9

31M57-2470 (31M57-2470 DC Motor)

减速比 Reduction ratio	3.7	5.2	14	19	27	51	71	100	139	182	219	254
减速级数 Number of gear trains	1	1	2	2	2	3	3	3	3	4	4	4
减速器长度(L) Length(L) mm	25.7	25.7	32.8	32.8	32.8	39.7	39.7	39.7	39.7	46.6	46.6	46.6
空载转速 No-load speed r/min	1892	1346	500	368	259	137	99	70	50	38	32	28
额定转速 Rated speed r/min	1486	1058	393	289	204	108	77	55	40	30	25	22
额定转矩 Rated torque N.m	0.073	0.10	0.25	0.34	0.48	0.82	1.1	1.6	2.2	2.6	3	3
最大瞬间允许负载 Max. permissible load in a short time N.m	1.0	1.0	3.5	3.5	3.5	7.5	7.5	7.5	7.5	9	9	9

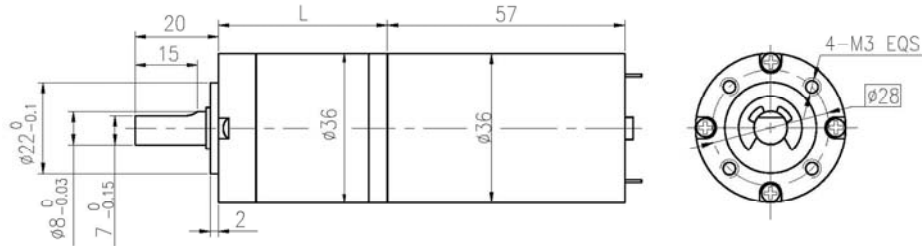
PM DC Planetary Gear Motor (Ring Gear Material: Metal and Powder Metal)

PGM36-30K/36M57

36mm Planetary Gearbox

Permissible Load Range: 0.3N.m~3.0N.m

• Dimensions



• Motor Technical Data

电机型号 TYPE	额定电压 Rated voltage VDC	空载转速 No-load speed r/min	空载电流 No-load current mA	额定转速 Rated speed r/min	额定转矩 Rated torque mN.m	输出功率 Output power W	额定电流 Rated current A	堵转转矩 Stall torque mN.m	堵转电流 Stall current A
36M57-2430	24	3000	100	2500	15	4.5	0.52	92	2.2
36M57-2442	24	4200	120	3600	19	7	0.52	97	2.8

12V DC Optional, speed and torque is the same as 24V DC's.

• Gear Motor Technical Data

36M57-2430 (36M57-2430 DC Motor)

减速比 Reduction ratio	3.7	5.2	14	19	27	51	71	100	139	181	219	254	306	354	427
减速级数 Number of gear trains	1	1	2	2	2	3	3	3	3	4	4	4	4	4	4
减速器长度(L) Length(L) mm	26.5	26.5	33.6	33.6	33.6	40.5	40.5	40.5	40.5	47.4	47.4	47.4	47.4	47.4	47.4
空载转速 No-load speed r/min	809	579	214	158	111	59	42	30	22	16	14	12	9.8	8.5	7.0
额定转速 Rated speed r/min	674	483	179	132	93	49	35	25	18	13	11	9.8	8.2	7.1	5.9
额定转矩 Rated torque N.m	0.050	0.070	0.17	0.23	0.33	0.56	0.78	1.1	1.5	1.8	2.1	2.4	3	3	3
最大瞬时可允许负载 Max. permissible load in a short time N.m	1.0	1.0	3.5	3.5	3.5	7.5	7.5	7.5	7.5	9	9	9	9	9	9

36M57-2442 (36M57-2442 DC Motor)

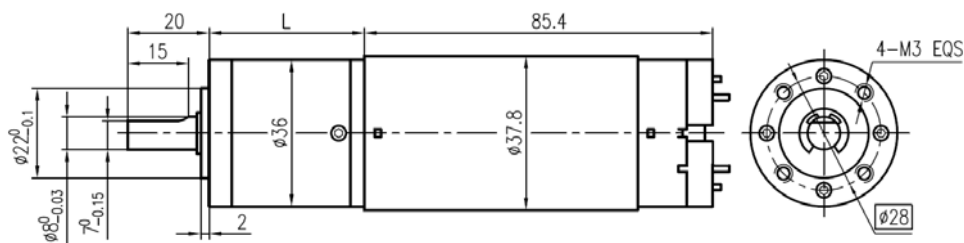
减速比 Reduction ratio	3.7	5.2	14	19	27	51	71	100	139	181	219	254	306	354
减速级数 Number of gear trains	1	1	2	2	2	3	3	3	3	4	4	4	4	4
减速器长度(L) Length(L) mm	26.5	26.5	33.6	33.6	33.6	40.5	40.5	40.5	40.5	47.4	47.4	47.4	47.4	47.4
空载转速 No-load speed r/min	1132	811	300	221	156	82	59	42	30	22	19	17	14	12
额定转速 Rated speed r/min	970	695	257	189	133	71	51	36	26	19	16	14	12	10
额定转矩 Rated torque N.m	0.063	0.089	0.22	0.29	0.42	0.71	0.98	1.4	1.9	2.3	2.7	3	3	3
最大瞬时可允许负载 Max. permissible load in a short time N.m	1.0	1.0	3.5	3.5	3.5	7.5	7.5	7.5	7.5	9	9	9	9	9

PM DC Planetary Gear Motor (Ring Gear Material: Metal)

PGM36-30K/36M85P

36mm Planetary Gearbox  
Permissible Load Range: 0.3N.m~3.0N.m

• Dimensions



• Motor Technical Data

电机型号 TYPE	额定电压 Rated voltage VDC	空载转速 No-load speed r/min	空载电流 No-load current mA	额定转速 Rated speed r/min	额定转矩 Rated torque m.Nm	输出功率 Output power W	额定电流 Rated current A	堵转转矩 Stall torque m.Nm	堵转电流 Stall current A
36M85P-1230	12	3000	250	2400	40	10	1.60	206	6.7
36M85P-2430	24	3000	150	2500	40	10	0.85	250	4.2

• Gear Motor Technical Data

36M85P-1230 (36M85P-1230 DC Motor)

减速比 Reduction ratio	3.7	5.2	14	19	27	51	71	100	139
减速级数 Number of gear trains	1	1	2	2	2	3	3	3	3
减速器长度(L) Length(L) mm	31.0	31.0	38.5	38.5	38.5	48.4	48.4	48.4	48.4
空载转速 No-load speed r/min	809	579	214	157	111	59	42	30	21
额定转速 Rated speed r/min	649	462	171	126	89	47	34	24	18
额定转矩 Rated torque N.m	0.13	0.19	0.45	0.62	0.87	1.5	2.1	2.9	3
最大瞬间允许负载 Max. permissible load in a short time N.m	1.0	1.0	3.5	3.5	3.5	7.5	9	9	9

36M85P-2430 (36M85P-2430 DC Motor)

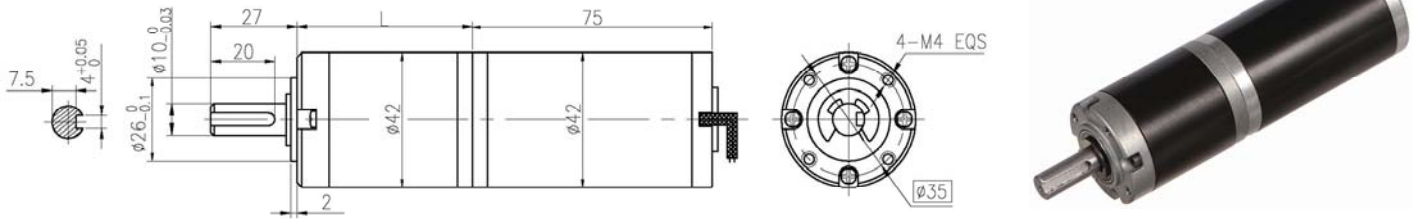
减速比 Reduction ratio	3.7	5.2	14	19	27	51	71	100	139
减速级数 Number of gear trains	1	1	2	2	2	3	3	3	3
减速器长度(L) Length(L) mm	31.0	31.0	38.5	38.5	38.5	48.4	48.4	48.4	48.4
空载转速 No-load speed r/min	809	579	214	157	111	59	42	30	21
额定转速 Rated speed r/min	674	483	179	132	93	49	35	25	19
额定转矩 Rated torque N.m	0.13	0.19	0.45	0.62	0.87	1.5	2.1	2.9	3
最大瞬间允许负载 Max. permissible load in a short time N.m	1.0	1.0	3.5	3.5	3.5	7.5	9	9	9

PM DC Planetary Gear Motor (Ring Gear Material: Metal and Powder Metal)

PGM42-100K/42M75

42mm Planetary Gearbox  
Permissible Load Range: 1N.m~10N.m

• Dimensions



• Motor Technical Data

电机型号 TYPE	额定电压 Rated voltage VDC	空载转速 No-load speed r/min	空载电流 No-load current A	额定转速 Rated speed r/min	额定转矩 Rated torque mN.m	输出功率 Output power W	额定电流 Rated current A	堵转力矩 Stall torque mN.m	堵转电流 Stall current A
42M75-2430	24	3000	0.15	2500	44	11.5	0.75	259	3.55
42M75-2440	24	4000	0.20	3500	55	20	1.2	360	6.3

• Gear Motor Technical Data

42M75-2430 (42M75-2430DC Motor)

减速比 Reduction ratio	3.71	5.18	14	19	27	51	71	100	139	181	219	254	306	354	427
减速级数 Number of gear trains	1	1	2	2	2	3	3	3	3	4	4	4	4	4	4
减速器长度(L) Length(L) mm	31.5	31.5	42.1	42.1	42.1	52.5	52.5	52.5	52.5	62.9	62.9	62.9	62.9	62.9	62.9
空载转速 No-load speed r/min	809	579	214	158	111	59	42	30	22	17	14	12	9.8	8.5	7.0
额定转速 Rated speed r/min	674	483	179	132	93	49	35	25	18	14	11	9.9	8.2	7.1	5.9
额定转矩 Rated torque N.m	0.15	0.21	0.50	0.68	0.96	1.6	2.3	3.2	4.5	5.2	6.3	7.3	8.8	10	10
最大瞬时允许负载 Max. permissible load in a short time N.m	3	3	12	12	12	25	25	25	25	30	30	30	30	30	30

42M75-2440 (42M75-2440DC Motor)

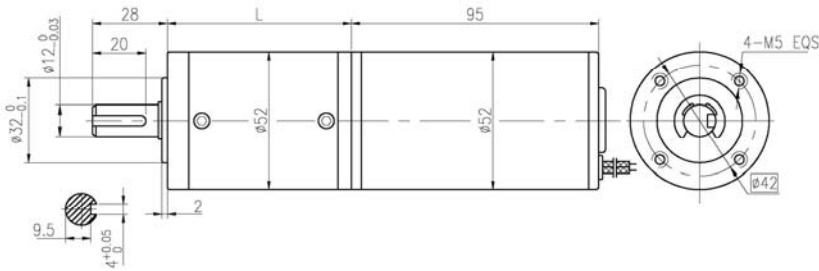
减速比 Reduction ratio	3.71	5.18	14	19	27	51	71	100	139	181	219	254	306	354
减速级数 Number of gear trains	1	1	2	2	2	3	3	3	3	4	4	4	4	4
减速器长度(L) Length(L) mm	31.5	31.5	42.1	42.1	42.1	52.5	52.5	52.5	52.5	62.9	62.9	62.9	62.9	62.9
空载转速 No-load speed r/min	1078	772	286	211	148	78	56	40	29	22	18	16	13	11
额定转速 Rated speed r/min	943	676	250	184	130	69	49	35	25	19	16	14	11	9.9
额定转矩 Rated torque N.m	0.18	0.26	0.62	0.85	1.2	2.1	2.9	4.0	5.6	6.5	7.8	9.1	10	10
最大瞬时允许负载 Max. permissible load in a short time N.m	3	3	12	12	12	25	25	25	25	30	30	30	30	30

PM DC Planetary Gear Motor (Ring Gear Material: Metal)

PGM52-300K/52M95

52mm Planetary Gearbox  
Permissible Load Range: 2N.m~30N.m

• Dimensions



• Motor Technical Data

电机型号 TYPE	额定电压 Rated voltage VDC	空载转速 No-load speed r/min	空载电流 No-load current A	额定转速 Rated speed r/min	额定转矩 Rated torque N.m	输出功率 Output power W	额定电流 Rated current A	堵转力矩 Stall torque N.m	堵转电流 Stall current A
52M95-2430	24	3000	0.45	2300	0.12	29	1.9	0.54	9.3
52M95-2440	24	4000	0.48	3400	0.11	39	2.7	0.73	12.3

• Gear Motor Technical Data

52M95-2430 (52M95-2430 DC Motor)

减速比 Reduction ratio	3.60	4.25	13	15	18	23	47	55	65	77	96	121	153	187	220	260	307	409
减速级数 Number of gear trains	1	1	2	2	2	2	3	3	3	3	3	3	4	4	4	4	4	4
减速器长度(L) Length(L) mm	45.7	45.7	57.2	57.2	57.2	57.2	68.5	68.5	68.5	68.5	68.5	68.5	79.8	79.8	79.8	79.8	79.8	79.8
空载转速 No-load speed r/min	833	706	231	200	167	130	64	55	46	39	31	25	20	16	14	12	9.8	7.3
额定转速 Rated speed r/min	639	541	177	153	128	100	49	42	35	30	24	19	15	12	11	8.8	7.5	5.6
额定转矩 Rated torque N.m	0.39	0.46	1.4	1.6	1.7	2.2	4.6	5.3	5.7	6.7	8.4	11	13	16	17	20	24	30
最大瞬间允许负载 Max. permissible load in a short time N.m	6	6	36	36	36	36	72	72	72	72	72	72	90	90	90	90	90	90

52M95-2440 (52M95-2440 DC Motor)

减速比 Reduction ratio	3.60	4.25	13	15	18	23	47	55	65	77	96	121	153	187	220	260	307	409
减速级数 Number of gear trains	1	1	2	2	2	2	3	3	3	3	3	3	4	4	4	4	4	4
减速器长度(L) Length(L) mm	45.7	45.7	57.2	57.2	57.2	57.2	68.5	68.5	68.5	68.5	68.5	68.5	79.8	79.8	79.8	79.8	79.8	79.8
空载转速 No-load speed r/min	1111	941	308	267	222	174	85	73	62	52	42	33	26	21	18	15	13	9.8
额定转速 Rated speed r/min	944	800	262	227	189	148	72	62	52	44	35	28	22	18	16	13	11	8.3
额定转矩 Rated torque N.m	0.36	0.42	1.3	1.5	1.6	2.0	4.2	4.9	5.2	6.2	7.7	9.7	12	15	16	19	22	29
最大瞬间允许负载 Max. permissible load in a short time N.m	6	6	36	36	36	36	72	72	72	72	72	72	90	90	90	90	90	90



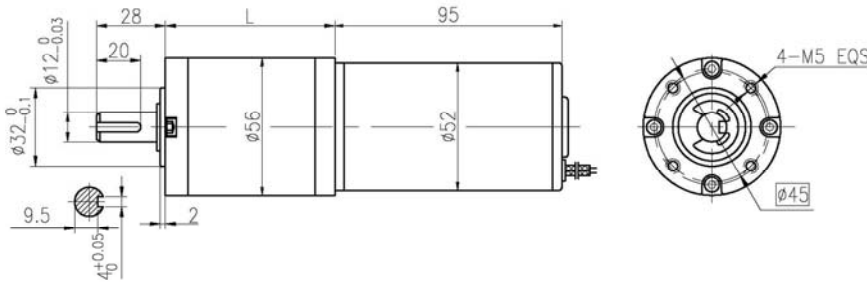
PM DC Planetary Gear Motor (Ring Gear Material: Metal)

PGM56-300K/52M95

56mm Planetary Gearbox

Permissible Load Range: 2N.m~30N.m

• Dimensions



• Motor Technical Data

电机型号 TYPE	额定电压 Rated voltage VDC	空载转速 No-load speed r/min	空载电流 No-load current A	额定转速 Rated speed r/min	额定转矩 Rated torque N.m	输出功率 Output power W	额定电流 Rated current A	堵转力矩 Stall torque N.m	堵转电流 Stall current A
52M95-2430	24	3000	0.45	2300	0.12	29	1.9	0.54	9.3
52M95-2440	24	4000	0.48	3400	0.11	39	2.7	0.73	12.3

• Gear Motor Technical Data

52M95-2430 (52M95-2430 DC Motor)

减速比 Reduction ratio	3.60	4.25	13	15	18	23	47	55	65	77	96	121	153	187	220	260	307	409
减速级数 Number of gear trains	1	1	2	2	2	2	3	3	3	3	3	3	4	4	4	4	4	4
减速器长度(L) Length(L) mm	37.8	37.8	49.5	49.5	49.5	49.5	60.8	60.8	60.8	60.8	60.8	60.8	71.9	71.9	71.9	71.9	71.9	71.9
空载转速 No-load speed r/min	833	706	231	200	167	130	64	55	46	39	31	25	20	16	14	12	9.8	7.3
额定转速 Rated speed r/min	639	541	177	153	128	100	49	42	35	30	24	19	15	12	11	8.8	7.5	5.6
额定转矩 Rated torque N.m	0.39	0.46	1.4	1.6	1.7	2.2	4.6	5.3	5.7	6.7	8.4	11	13	16	17	20	24	30
最大瞬间允许负载 Max. permissible load in a short time N.m	6	6	36	36	36	36	72	72	72	72	72	72	90	90	90	90	90	90

52M95-2440 (52M95-2440 DC Motor)

减速比 Reduction ratio	3.60	4.25	13	15	18	23	47	55	65	77	96	121	153	187	220	260	307	409
减速级数 Number of gear trains	1	1	2	2	2	2	3	3	3	3	3	3	4	4	4	4	4	4
减速器长度(L) Length(L) mm	37.8	37.8	49.5	49.5	49.5	49.5	60.8	60.8	60.8	60.8	60.8	60.8	71.9	71.9	71.9	71.9	71.9	71.9
空载转速 No-load speed r/min	1111	914	308	267	222	174	85	73	62	52	42	33	26	21	18	15	13	9.8
额定转速 Rated speed r/min	944	800	262	227	189	148	72	62	52	44	35	28	22	18	16	13	11	8.3
额定转矩 Rated torque N.m	0.36	0.42	1.3	1.5	1.6	2.0	4.2	4.9	5.2	6.2	7.7	9.7	12	15	16	19	22	29
最大瞬间允许负载 Max. permissible load in a short time N.m	6	6	36	36	36	36	72	72	72	72	72	72	90	90	90	90	90	90

