

# PM DC PLANETARY GEAR MOTOR (Ring Gear Material: Metal)

PGM32-30K/28 47P

32mm OD Planetary Gearbox,  
Permissible Load Range: 0.3N.m~3.0N.m



## ● 电动机主要技术参数 Motor Technical Data

电机型号 TYPE	额定电压 Rated voltage VDC	空载转速 No-load speed r/min	空载电流 No-load current mA	额定转速 Rated speed r/min	额定转矩 Rated torque mN.m	输出功率 Output power W	额定电流 Rated current mA	堵转力矩 Stall torque mN.m	堵转电流 Stall current A
28M47P-2460	24	6000	100	4500	17	8.0	470	65	1.8

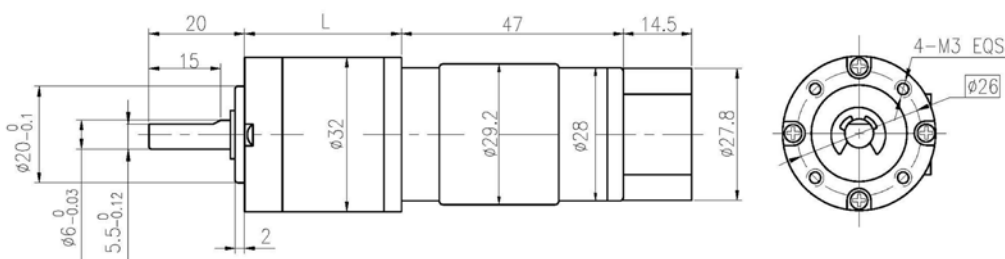
电机型号中增加代号 P, 表示配置了屏蔽罩, 直径为  $\Phi 28.9$ 。 P - Shielding case, OD 28.9mm.

## ● 齿轮减速电机主要技术参数 Gear Motor Technical Data

配置 28M47P-2460 直流电机 (28M47P-2460 DC Motor)

减速比 Reduction ratio	3.7	5.2	14	19	27	51	71	100	139	181	218	253	305	354
减速级数 Number of gear trains	1	1	2	2	2	3	3	3	3	4	4	4	4	4
减速器长度(L) Length(L) mm	25.7	25.7	32.8	32.8	32.8	39.7	39.7	39.7	39.7	46.6	46.6	46.6	46.6	46.6
空载转速 No-load speed /min	1617	1158	429	316	222	118	85	60	43	33	28	24	20	17
额定转速 Rated speed r/min	1213	869	321	237	167	88	63	45	32	25	21	18	15	13
额定转矩 Rated torque N.m	0.06	0.08	0.19	0.26	0.37	0.63	0.88	1.2	1.7	2.0	2.4	2.8	3	3
最大瞬间允许负载 Max. permissible load in a short time N.m	1.0	1.0	3.5	3.5	3.5	7.5	7.5	7.5	7.5	9	9	9	9	9

## ● 外形和安装尺寸 Dimensions



## ● 配置磁编码器 Magnetic Encoder

model: CBM28-3 2channels, CW/CCW, 3PPR

wire length 250mm



1. MOTOR-
2. MOTOR+
3. HALL SENSOR Vcc
4. HALL SENSOR GND
5. HALL SENSOR A Vout
6. HALL SENSOR B Vout

# PM DC PLANETARY GEAR MOTOR (Ring Gear Material: Metal)

## PGM32-30K/31M51G

32mm OD Planetary Gearbox,  
Permissible Load Range: 0.3N.m~3.0N.m



### 电动机主要技术参数 Motor Technical Data

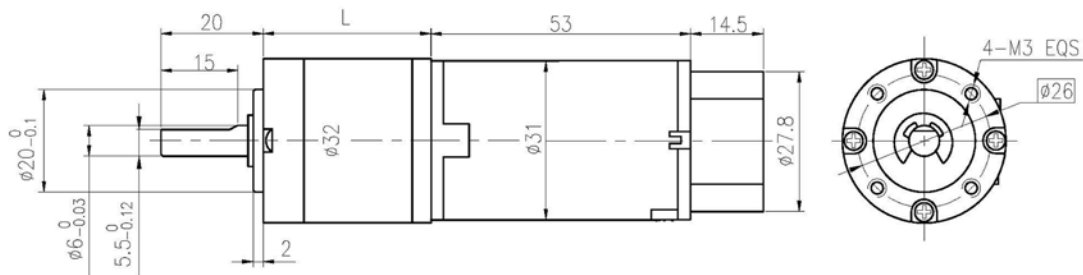
电机型号 TYPE	额定电压 Rated voltage VDC	空载转速 No-load speed r/min	空载电流 No-load current mA	额定转速 Rated speed r/min	额定转矩 Rated torque m. Nm	输出功率 Output power W	额定电流 Rated current mA	堵转力矩 Stall torque m. Nm	堵转电流 Stall current A
31M51G-2450	24	5000	75	3830	25	9.8	570	106.8	2.3

### 齿轮减速电机主要技术参数 Gear Motor Technical Data

配置 31M51G-2450 直流电机 (31M51G-2450 DC Motor)

减速比 Reduction ratio	3.7	5.2	14	19	27	51	71	100	139	181	219	254
减速级数 Number of gear trains	1	1	2	2	2	3	3	3	3	4	4	4
减速器长度(L) Length(L) mm	25.7	25.7	32.8	32.8	32.8	39.7	39.7	39.7	39.7	46.6	46.6	46.6
空载转速 No-load speed /min	1351	962	357	263	185	98	70	50	36	28	23	20
额定转速 Rated speed r/min	1035	737	274	202	142	75	54	38	28	21	17	15
额定转矩 Rated torque N.m	0.083	0.117	0.284	0.385	0.547	0.929	1.294	1.823	2.533	2.969	3.592	4.166
最大瞬间允许负载 Max. permissible load in a short time N.m	1.0	1.0	3.5	3.5	3.5	7.5	7.5	7.5	7.5	9	9	9

### 外形和安装尺寸 Dimensions



### 配置磁编码器 Magnetic Encoder

model: CBM28-3 2channels, CW/CCW, 3PPR

wire length 250mm



1. MOTOR-
2. MOTOR+
3. HALL SENSOR Vcc
4. HALL SENSOR GND
5. HALL SENSOR A Vout
6. HALL SENSOR B Vout

永磁直流行星齿轮(编码器)电机 (内齿圈材质: 金属和粉末金属)  
 PM DC PLANETARY GEAR MOTOR (Ring Gear Material: Metal and Powder Metal)

**PGM36-30K/36M50** 36mm OD Planetary Gearbox,  
Permissible Load Range: 0.3N.m~3.0N.m



● 电动机主要技术参数 Motor Technical Data

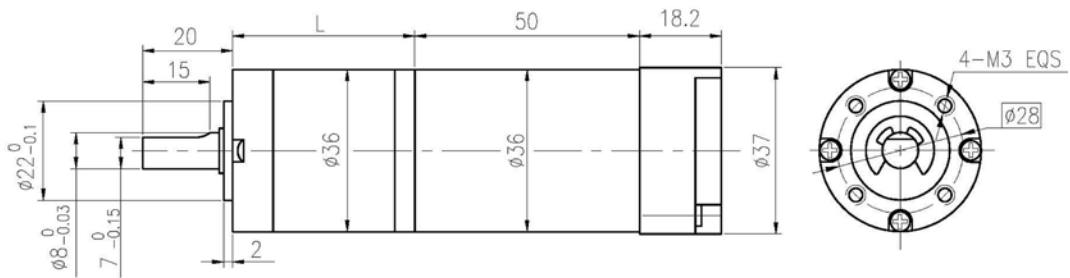
电机型号 TYPE	额定电压 Rated voltage VDC	空载转速 No-load speed r/min	空载电流 No-load current mA	额定转速 Rated speed r/min	额定转矩 Rated torque mN.m	输出功率 Output power W	额定电流 Rated current A	堵转力矩 Stall torque mN.m	堵转电流 Stall current A
36M50-2442	24	4200	120	3450	12	4.2	0.43	52	1.6

● 齿轮减速电机主要技术参数 Gear Motor Technical Data

配置 36M50-2442 直流电机 (36M50-2442 DC Motor)

减速比 Reduction ratio	3.7	5.2	14	19	27	51	71	100	139	181	218	253	305	354	426	495
减速级数 Number of gear trains	1	1	2	2	2	3	3	3	3	4	4	4	4	4	4	4
减速器长度(L) Length(L) mm	26.5	26.5	33.6	33.6	33.6	40.5	40.5	40.5	40.5	47.4	47.4	47.4	47.4	47.4	47.4	47.4
空载转速 No-load speed r/min	1132	811	300	221	156	82	59	42	30	23	19	17	14	12	10	8.5
额定转速 Rated speed r/min	930	666	246	182	128	68	49	35	25	19	16	14	11	9.7	8.1	7.0
额定转矩 Rated torque N.m	0.040	0.056	0.14	0.18	0.26	0.45	0.62	0.88	1.2	1.4	1.7	2.0	2.4	2.8	3	3
最大瞬间允许负载 Max. permissible load in a short time N.m	1.0	1.0	3.5	3.5	3.5	7.5	7.5	7.5	7.5	9	9	9	9	9	9	9

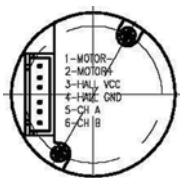
● 外形和安装尺寸 Dimensions



● 配置磁编码器 Magnetic Encoder

model: CBM36-4 2channels, CW/CCW, 4PPR

Flat cable length 350mm



1. MOTOR-
2. MOTOR+
3. HALL SENSOR Vcc
4. HALL SENSOR GND
5. HALL SENSOR A Vout
6. HALL SENSOR B Vout

PM DC PLANETARY GEAR MOTOR (Ring Gear Material: Metal and Powder Metal)

## PGM36-30K/36M57

36mm OD Planetary Gearbox,  
Permissible Load Range: 0.3N.m~3.0N.m



● 电动机主要技术参数 Motor Technical Data

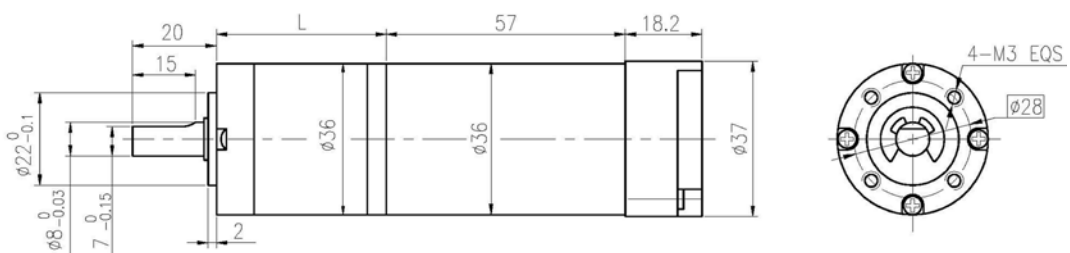
电机型号 TYPE	额定电压 Rated voltage VDC	空载转速 No-load speed r/min	空载电流 No-load current mA	额定转速 Rated speed r/min	额定转矩 Rated torque mN.m	输出功率 Output power W	额定电流 Rated current A	堵转力矩 Stall torque mN.m	堵转电流 Stall current A
36M57-2442	24	4200	120	3600	19	7	0.52	97	2.8

● 齿轮减速电机主要技术参数 Gear Motor Technical Data

配置 36M57-2442 直流电机 (36M57-2442 DC Motor)

减速比 Reduction ratio	3.7	5.2	14	19	27	51	71	100	139	181	218	253	305	354
减速级数 Number of gear trains	1	1	2	2	2	3	3	3	3	4	4	4	4	4
减速器长度(L) Length(L) mm	26.5	26.5	33.6	33.6	33.6	40.5	40.5	40.5	40.5	47.4	47.4	47.4	47.4	47.4
空载转速 No-load speed r/min	1132	811	300	221	156	82	59	42	30	23	19	17	14	12
额定转速 Rated speed r/min	970	695	257	189	133	71	51	36	26	20	17	14	12	8.5
额定转矩 Rated torque N.m	0.063	0.089	0.22	0.29	0.42	0.71	0.98	1.4	1.9	2.2	2.7	3	3	3
最大瞬间允许负载 Max. permissible load in a short time N.m	1.0	1.0	3.5	3.5	3.5	7.5	7.5	7.5	7.5	9	9	9	9	9

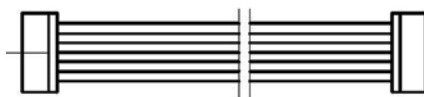
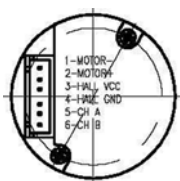
● 外形和安装尺寸 Dimensions



● 配置磁编码器 Magnetic Encoder

model: CBM36-4 2channels, CW/CCW, 4PPR

Flat cable length 350mm



1. MOTOR-
2. MOTOR+
3. HALL SENSOR Vcc
4. HALL SENSOR GND
5. HALL SENSOR A Vout
6. HALL SENSOR B Vout

# PM DC PLANETARY GEAR MOTOR (Ring Gear Material: Metal and Powder Metal)

## PGM42-100K/42M68P

42mm Planetary Gearbox

Permissible Load Range: 1N.m~10N.m



### ● 电动机主要技术参数 Motor Technical Data

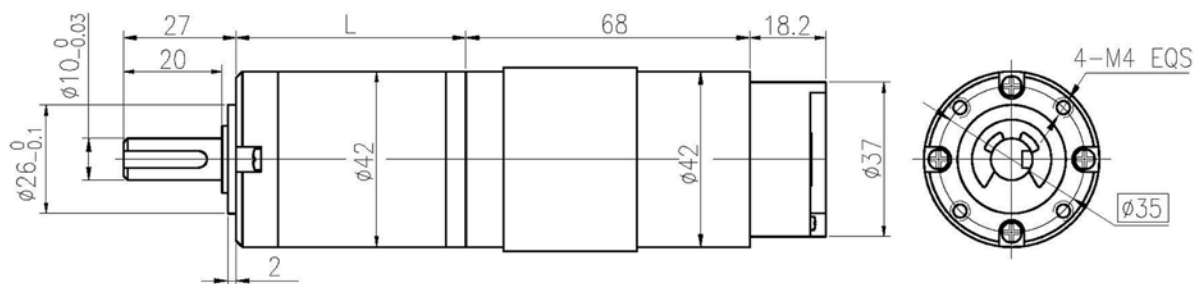
电机型号 TYPE	额定电压 Rated voltage VDC	空载转速 No-load speed r/min	空载电流 No-load current A	额定转速 Rated speed r/min	额定转矩 Rated torque mN.m	输出功率 Output power W	额定电流 Rated current A	堵转力矩 Stall torque mN.m	堵转电流 Stall current A
42M75-2440	24	4000	0.20	3500	55	20	1.2	360	6.3

### ● 齿轮减速电机主要技术参数 Gear Motor Technical Data

配置 42M75-2440 直流电机 (42M75-2440DC Motor)

减速比 Reduction ratio	3.71	5.18	14	19	27	51	71	100	139	181	218	253	305	354
减速级数 Number of gear trains	1	1	2	2	2	3	3	3	3	4	4	4	4	4
减速器长度(L) Length(L) mm	31.5	31.5	42.1	42.1	42.1	52.5	52.5	52.5	52.5	62.9	62.9	62.9	62.9	62.9
空载转速 No-load speed r/min	1078	772	286	211	148	78	56	40	29	22	18	16	13	11
额定转速 Rated speed r/min	943	676	250	184	130	69	49	35	25	19	16	14	11	9.9
额定转矩 Rated torque N.m	0.18	0.26	0.62	0.85	1.2	2.0	2.9	4.0	5.6	6.5	7.8	9.0	10	10
最大瞬间允许负载 Max. permissible load in a short time N.m	3	3	12	12	12	25	25	25	25	30	30	30	30	30

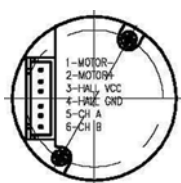
### ● 外形和安装尺寸 Dimensions



### ● 配置磁编码器 Magnetic Encoder

model: CBM36-4 2channels, CW/CCW, 4PPR

Flat cable length 350mm



1. MOTOR-
2. MOTOR+
3. HALL SENSOR Vcc
4. HALL SENSOR GND
5. HALL SENSOR A Vout
6. HALL SENSOR B Vout

PM DC PLANETARY GEAR MOTOR (Ring Gear Material: Metal and Powder Metal)

**PGM42-100K/42M75**

42mm Planetary Gearbox

Permissible Load Range: 1N.m~10N.m



● 电动机主要技术参数 Motor Technical Data

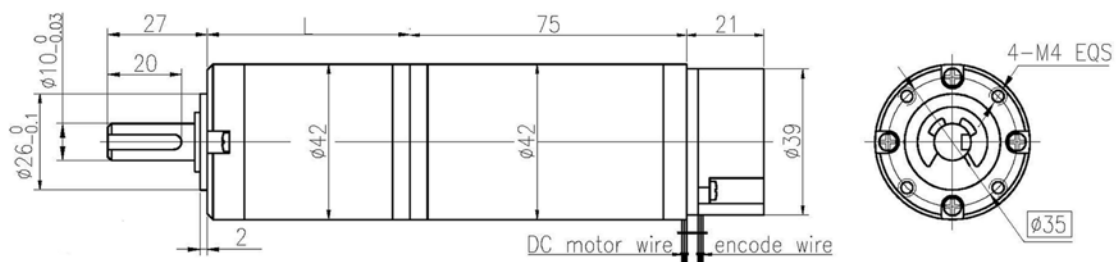
电机型号 TYPE	额定电压 Rated voltage VDC	空载转速 No-load speed r/min	空载电流 No-load current A	额定转速 Rated speed r/min	额定转矩 Rated torque mN.m	输出功率 Output power W	额定电流 Rated current A	堵转力矩 Stall torque mN.m	堵转电流 Stall current A
42M75-2440	24	4000	0.20	3500	55	20	1.2	360	6.3

● 齿轮减速电机主要技术参数 Gear Motor Technical Data

配置 42M75-2440 直流电机 (42M75-2440DC Motor)

减速比 Reduction ratio	3.71	5.18	14	19	27	51	71	100	139	181	218	253	305	354
减速级数 Number of gear trains	1	1	2	2	2	3	3	3	3	4	4	4	4	4
减速器长度(L) Length(L) mm	31.5	31.5	42.1	42.1	42.1	52.5	52.5	52.5	52.5	62.9	62.9	62.9	62.9	62.9
空载转速 No-load speed r/min	1078	772	286	211	148	78	56	40	29	22	18	16	13	11
额定转速 Rated speed r/min	943	676	250	184	130	69	49	35	25	19	16	14	11	9.9
额定转矩 Rated torque N.m	0.18	0.26	0.62	0.85	1.2	2.0	2.9	4.0	5.6	6.5	7.8	9.0	10	10
最大瞬间允许负载 Max. permissible load in a short time N.m	3	3	12	12	12	25	25	25	25	30	30	30	30	30

● 外形和安装尺寸 Dimensions



● 配置磁编码器 Magnetic Encoder

model: CBM40-8 2channels, CW/CCW, 8PPR

wire length 350mm

Red: Hall (+5V), Black: Hall (GND), Green: Hall output U1, Blue: Hall output U2

